

MOLDED RUBBER PARTS

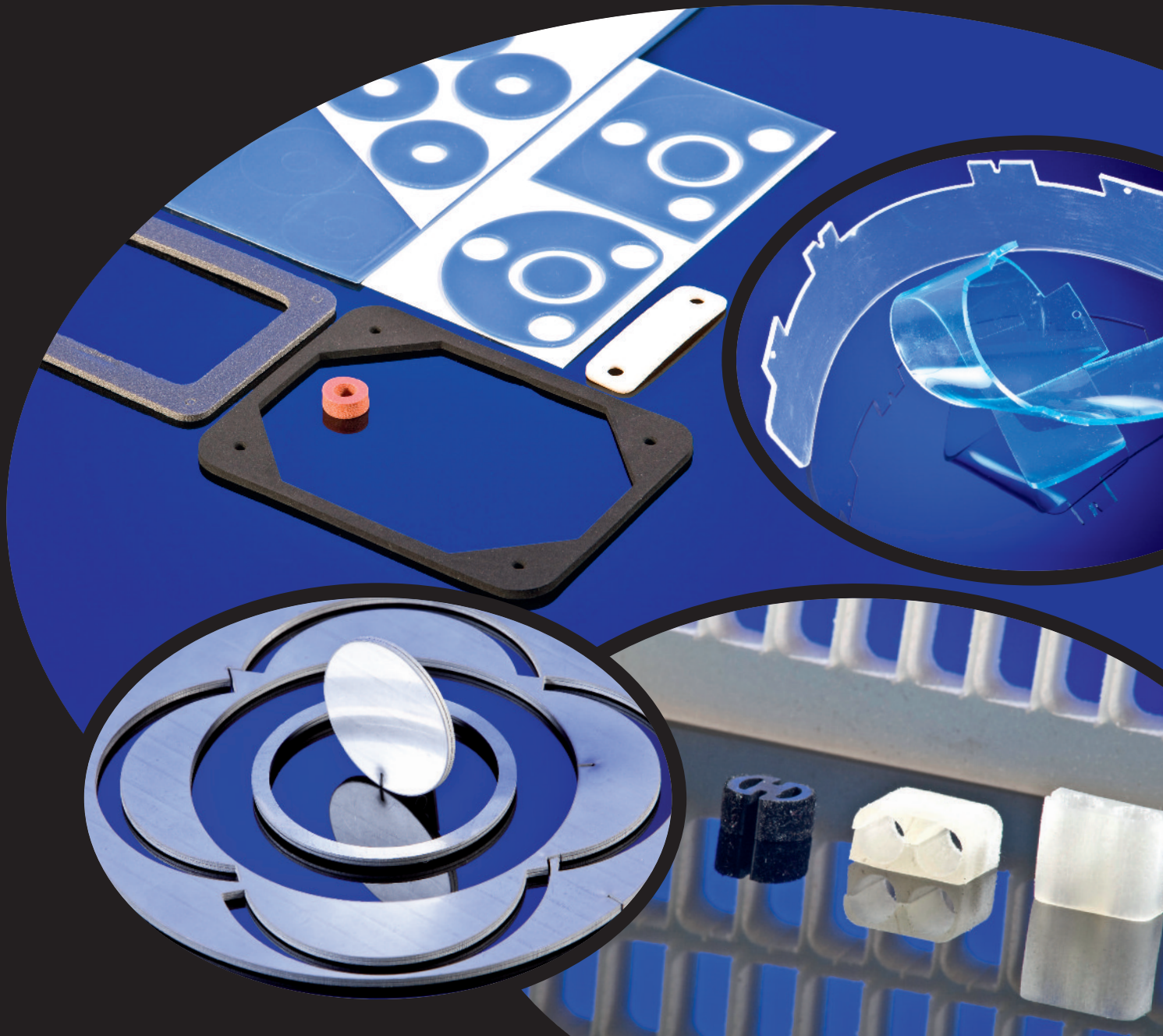
Our production machines are designed to turn out molded rubber parts with a part weight ranging from 1 g to 20 kg in all customary manufacturing processes.

- CM molding – TM molding – IM molding on vertical and horizontal machines
- Prototype molding, small series or fully automated industrial production – we offer just the perfect manufacturing process for any of your needs.
- In all customary elastomer qualities; also in compound formulae specifically developed for individual client applications
- Our service portfolio ranges from geometric and fully functional part design and dimensioning to the development of suitable compound mixings, allowing for specific requirements, e.g. chemical resistance, self-lubricating agents etc.
- Rubber mixtures: KTW certifications, meeting automotive standards, railway standards, building standards, structural bearing qualities



STAMPED PARTS

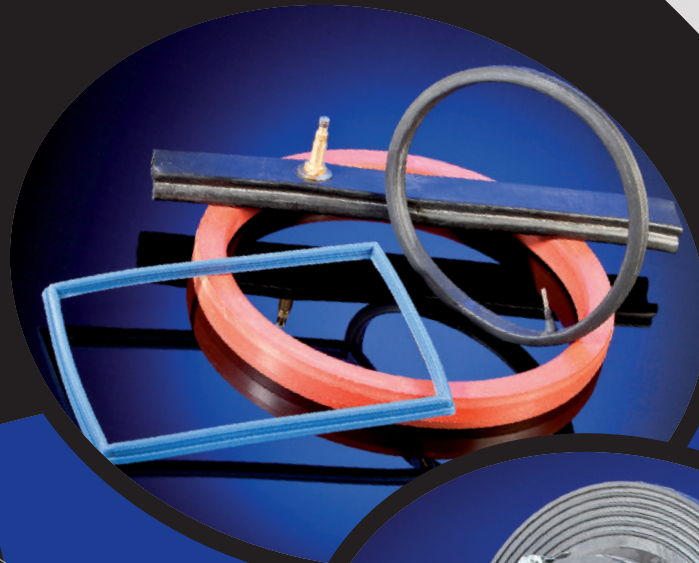
- Kiss cutting
- Beam cut pressing with cutting waste optimization
- Plotting or water jet cutting
- Realization in soft rubber, sponge rubber, cellular rubber, PE and PU foams
- All customary elastomer qualities and foams also available with self-adhesive finish
- Specialty: **rubber/metal sandwich panels** with minimal (= 0.30 mm) intermediate elastomer layers, special elastomers (FPM, ACM, HNBR), vulcanized and cut into form by water jet (for use as mounting components)



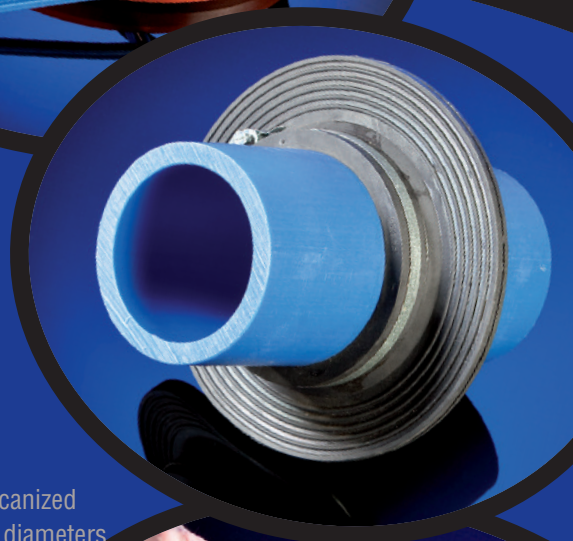
ASSEMBLY OF MOLDED RUBBER PARTS INTO FRAMES, RINGS AND INFLATABLE SEALS

We assemble molded rubber parts according to your specifications and requirements into products designed to serve as frames, rings and inflatable seals.

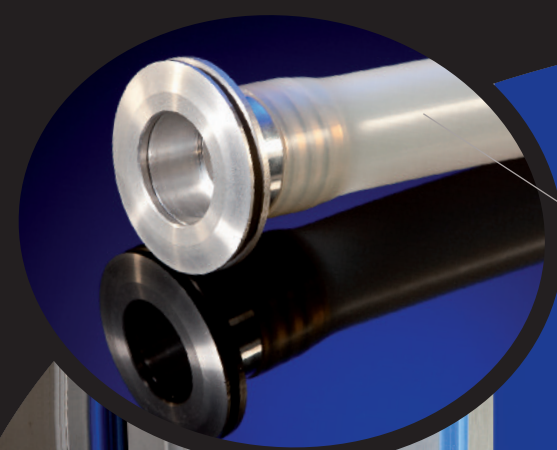
- Glued, film vulcanized or as molded forming tools
- With vulcanized or screwed valves
- In all customary elastomer qualities or compound formulae specifically developed for individual client applications



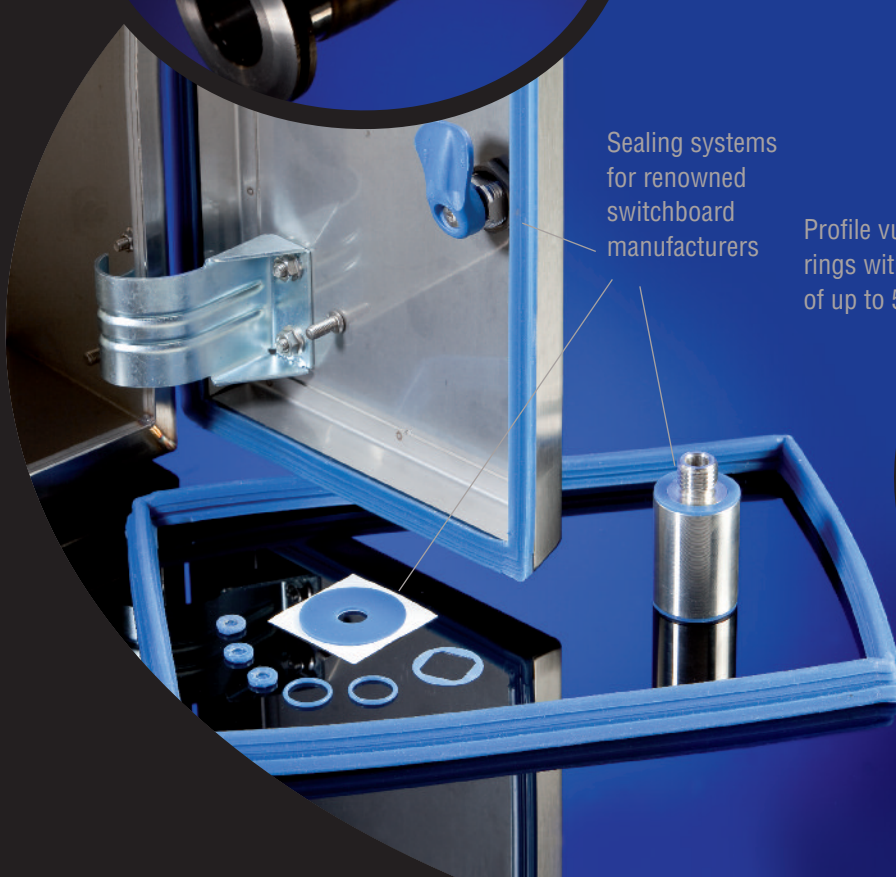
Functional systems
for state-of-the-art
stadium architecture



Profile vulcanized
rings with diameters
of up to 5 m



Sealing systems
for renowned
switchboard
manufacturers



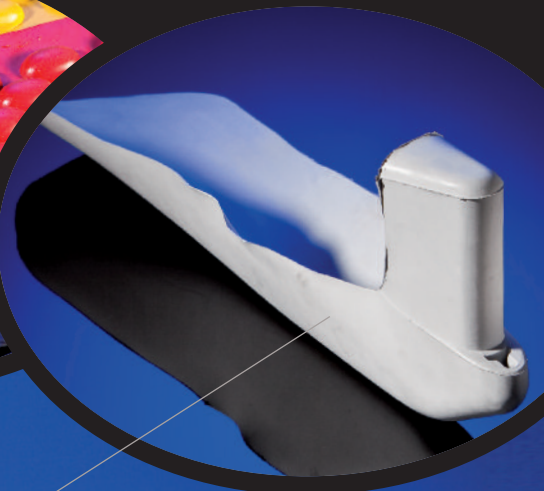
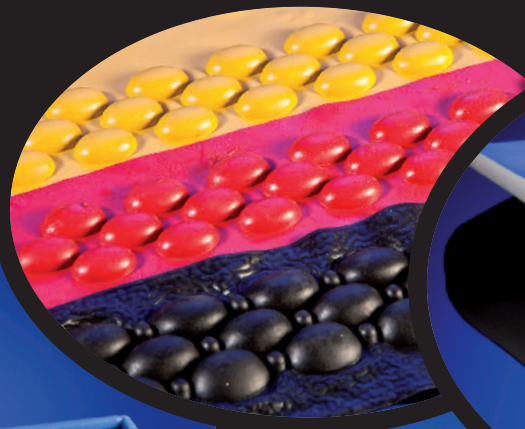
COLORED MOLDED RUBBER PARTS

It doesn't always need to be black.

- Molded rubber parts
- Stamped parts
- Profiles
- Frames

We provide you with rubber mixtures in all RAL colors.

- For more operating safety (e.g. by better distinguishability in camera surveillance)
- As color systems matched to your application
- As design elements (e.g. modules in CI colors)
- For functional reasons (e.g. blue seals as color contrast in food industry production)



Safety profiles in different colors for the outdoor industry



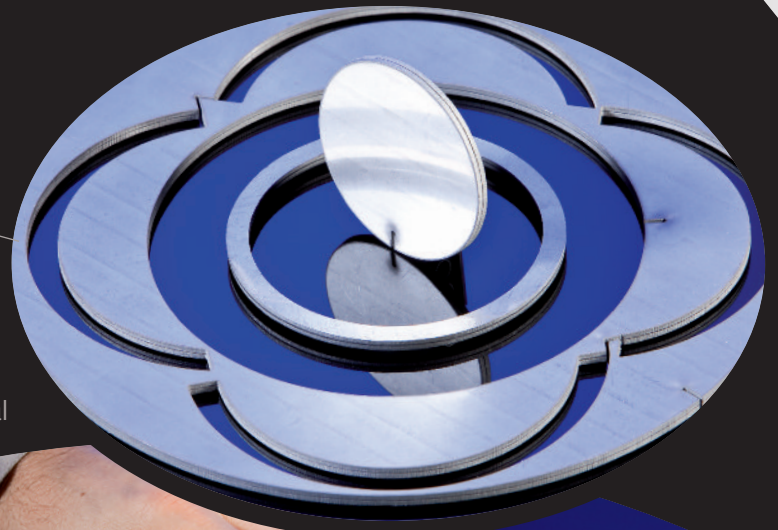
RUBBER/METAL AND RUBBER/PLASTIC COMPOSITES

From Rest Plates to Sandwich Elements

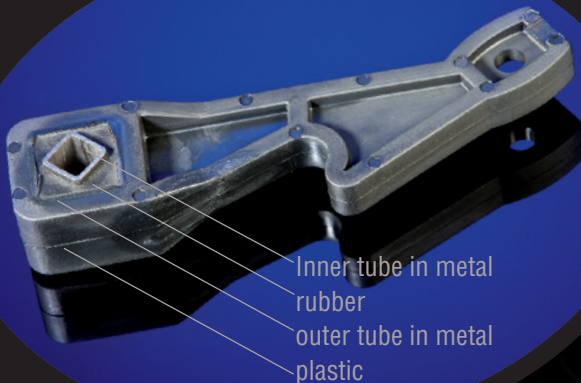
We develop and manufacture rubber/metal or rubber/plastic composites designed for your individual applications.

Owning a proper metal works department, we are able to produce a large variety and number of metal parts in-house. We dispose of an extensive know-how both in the pre-treatment and the coating of the metal/plastic components with bonding agents.

- In all customary elastomer qualities or compound formulae specifically developed for individual client applications
- Sandwich panels with elastomer intermediate layers of mereley 0.30 mm
- Products of up to 1,300 mm in length and 1,100 mm in breadth
- Rubber, metal and plastic composite parts as inserts accomplished by two stage hydroseeding or as rubber/metal composites



Large volume molded parts
of up to 1,300 in length



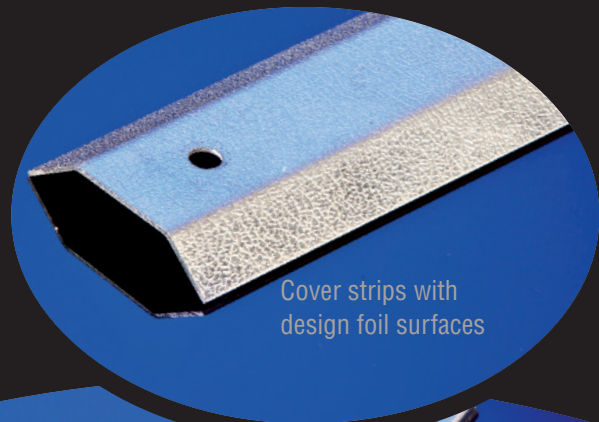
Inner tube in metal
rubber
outer tube in metal
plastic

METAL AND PLASTICS PROCESSING IN SMALL SERIES OF UP TO 1,000 PIECES

Metallic parts: milled, lathed, bended, welded, punched or lasered

Surfaces: anodized, powder-coated, blasted, hardened or anti-friction coated

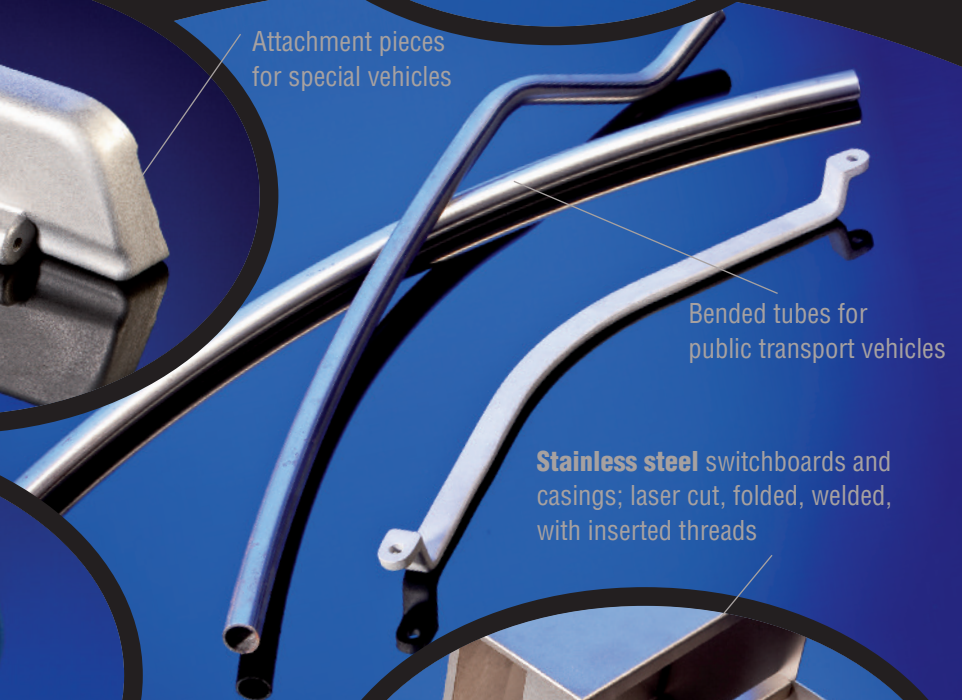
- **Bended rolled sheets**
with directly inserted threads
- **Bended stainless steel tubes**
- **Aluminum cast parts**, drilled and milled



Cover strips with
design foil surfaces

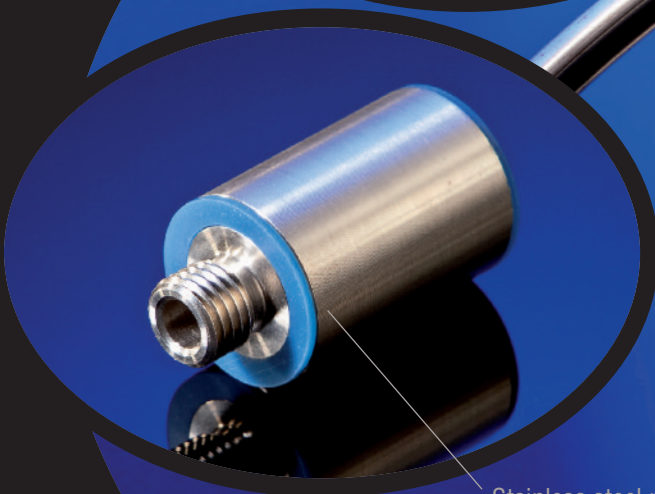


Attachment pieces
for special vehicles

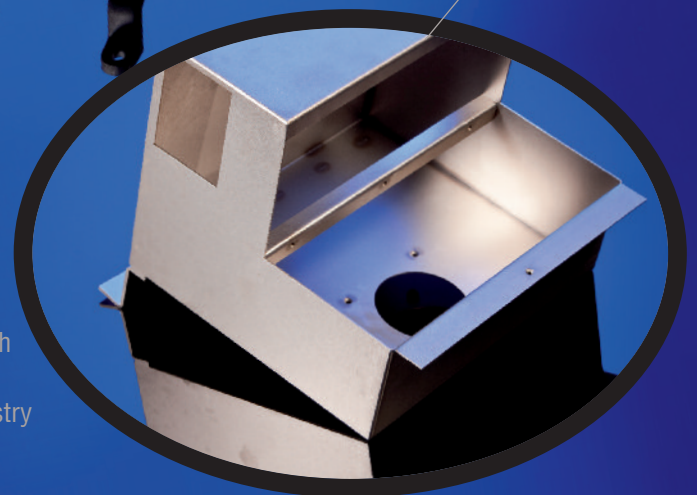


Bended tubes for
public transport vehicles

Stainless steel switchboards and casings; laser cut, folded, welded, with inserted threads



Stainless steel rotary parts with
silicone seal for switchboards
designed for the hygiene industry



FABRIC REINFORCED MEMBRANES

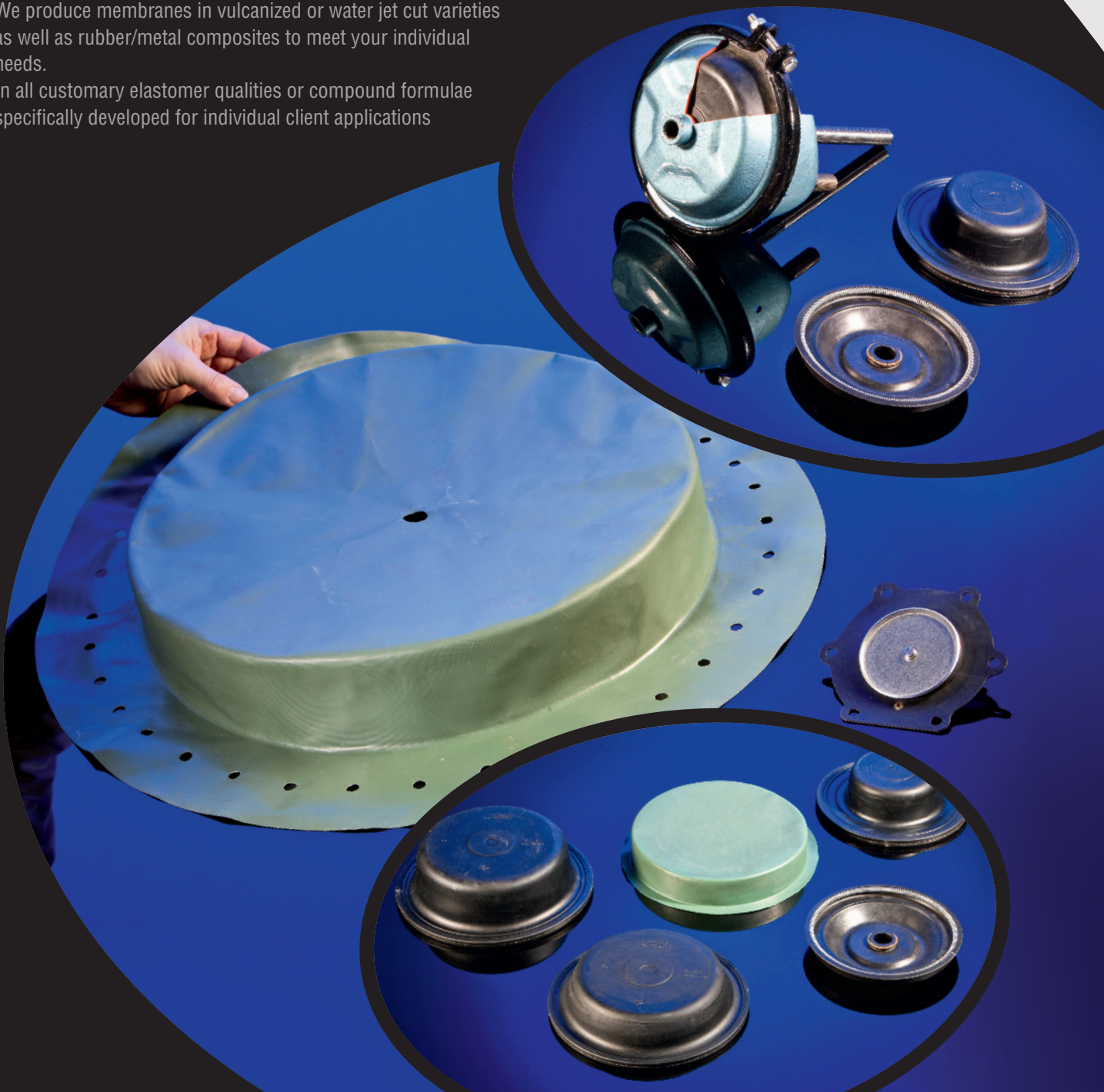
Our contribution to your security: the K.U.K.T. membranes designed as vital functional elements in

- Truck, trailer or bus break systems
- Waste gas purification facilities
- Biogas plants
- Chemical plants

but also as functional elements in

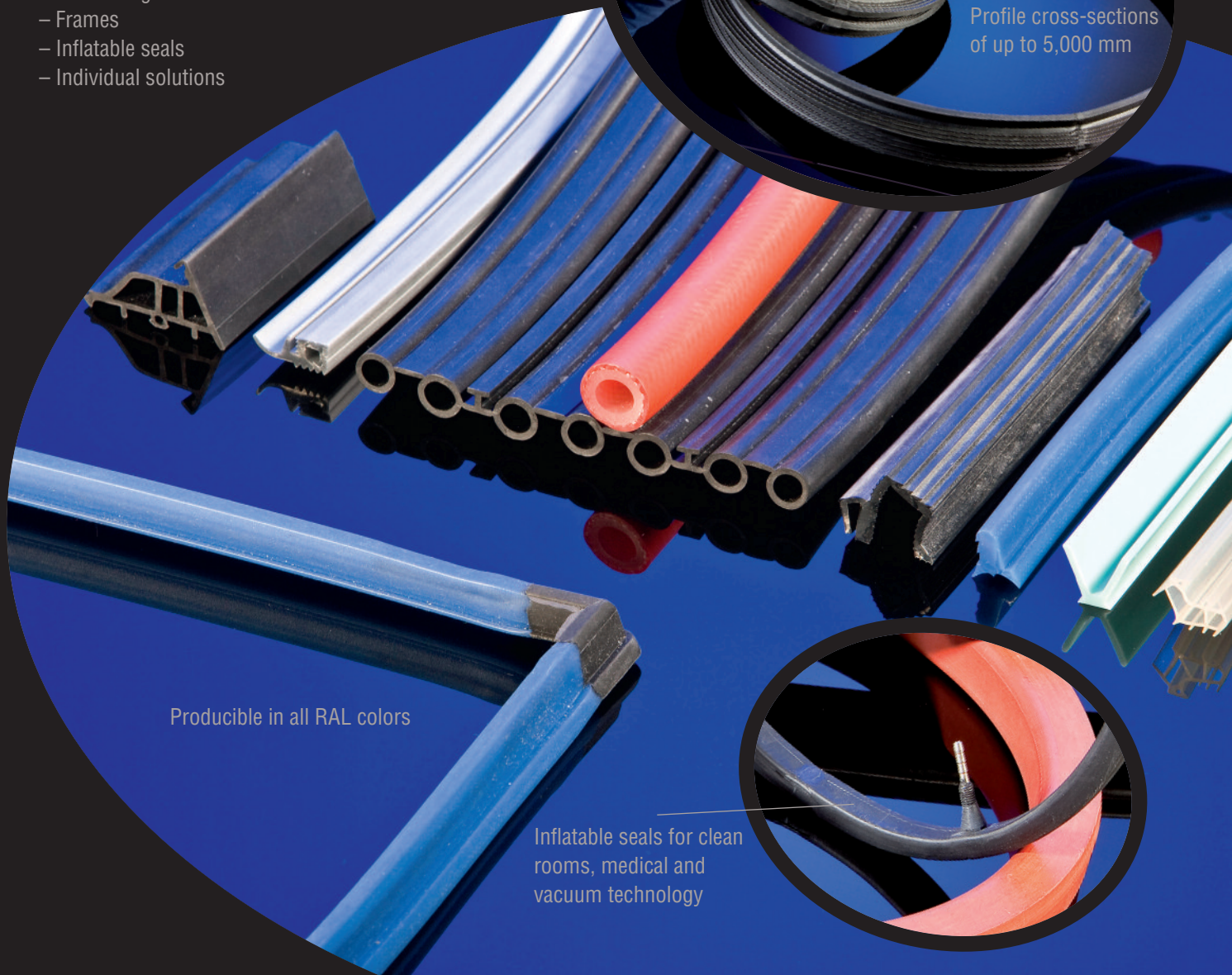
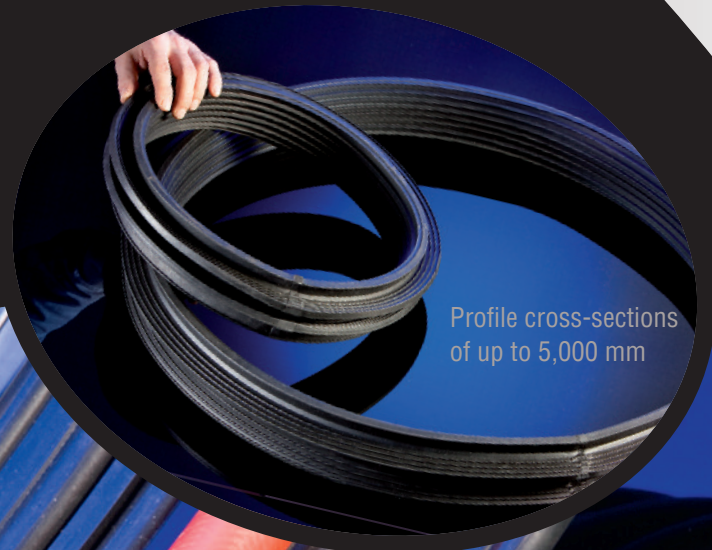
- Measuring, operation and control engineering

- We produce membranes in vulcanized or water jet cut varieties as well as rubber/metal composites to meet your individual needs.
- In all customary elastomer qualities or compound formulae specifically developed for individual client applications



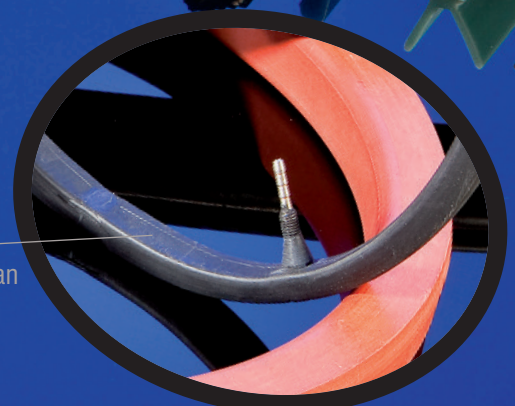
RUBBER & PLASTIC PROFILES

- Soft rubber
- Sponge rubber
- Silicone
- Hard and soft plastics
- Mono-, duplex and coextrudates,
also in fabric reinforced versions
- Continuous and discontinuous
- Coated with flock, anti-friction finish, silicone
- Self-adhesive finish, permanent and as fixing aid
- Cut to length, punched, notched, glued, vulcanized,
welded and (on customer demand) confectioned into
 - Toroidal sealing rings
 - Profile rings
 - Frames
 - Inflatable seals
 - Individual solutions



Producible in all RAL colors

Inflatable seals for clean
rooms, medical and
vacuum technology



LARGE VOLUME MOLDED RUBBER PARTS AND RUBBER/METAL COMPOSITES

- Part weights of up to 20 kg
- Sizes of 1,000 x 1,300 mm
- In all customary elastomer qualities or compound formulae specifically developed for individual client applications

Rest plates –
material: NR SBS with good abrasion properties, fabric reinforced and as rubber/metal composite



Producible in all
RAL colors



Structural bearings and
mounting components for
railway technology

Molded rubber parts
of up to 1,300 mm
length

